

No. Name Material

1	Anchor	Brass
---	--------	-------

Building materials

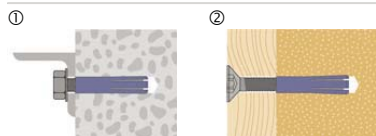


Characteristics

- Internally threaded anchor with metric connecting threads.
- The grooved and knurled anchor sleeve expands by turning in the screw.
- Form fit in soft building materials / end expansion in solid building materials.

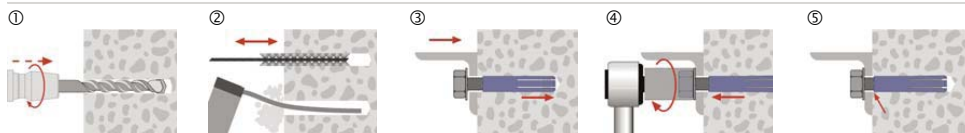
- Minor drilling depth.
- Corrosion-resistant.
- Heat-resistant.

Applications



- ① End expansion in solid building material.
- ② Form fit in soft building material.

Installation



- ① Take drill hole-Ø and drill hole depth from the table.
- ② Clean the drill hole with a brush, then blow it out with a purging pump.
- ③ Insert the Brass Anchor with pre-assembled screw into the drill hole until the screw head is flush to the Building materials.
- ④ Tighten the screw with accuracy (anchor will be retracted a little from the drill hole).
- ⑤ Anchor mustn't sit on the Building materials.

All information detailed in our data sheets is based on technical approvals, formulas and site and laboratory testing under optimum conditions and include a stated safety factor. As we have no direct or indirect control over where or how our products are applied or installed, we do not accept any liability either directly or indirectly arising from the use of our products, whether or not in accordance with any advice, specification or recommendation given by us and we recommend site testing of all products for suitability.

Anchor size		M4	M5	M6	M 8	M 10	M 12	M16	
Recommended tension loads: ¹⁾									
N _{Emp}	- Concrete uncracked C25 - C55	kN	0.5	0.7	0.85	1.5	2.5	3.5	3.9
	- Brick		0.4	0.55	0.7	1.2	1.6	2	3.25
c	Min. distance to the edge	mm	30	35	40	45	50	55	65
s	Min. distance betw. anchors	mm	50	50	60	65	70	75	90
h _{min}	Min. thickness of foundation	mm	25	27	35	40	45	50	53
d _s	For screw-Ø	mm	4	5	6	8	10	12	16
h ₁	Drill hole depth	mm	20	25	28	35	40	45	50
d ₀	Drill hole-Ø in the building material	mm	5	6.5	8	10	12	15	20
d _f	Hole-Ø in the attached part	mm	5	6	7	9	12	14	18
l _G	Thread length	mm	11	14	15	18	22	21	25
l	Anchor length	mm	16	20	22	27	32	32	45



Brass Anchor

1) Without influence of anchor and edge distance / Safety factor 3