

No.	Name	Material
1	Plug with countersunk head	Polyamide PA 6
2	Plug with cylindrical head	Polyamide PA 6
3	Plug with big head	Polyamide PA 6

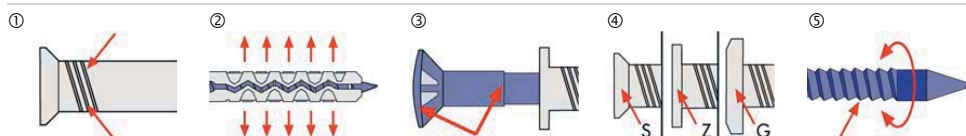
Building materials



Qualities

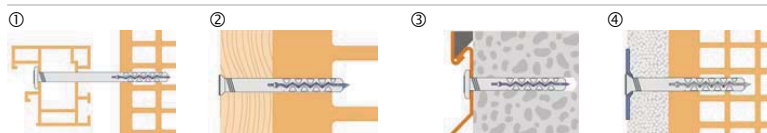


Characteristics



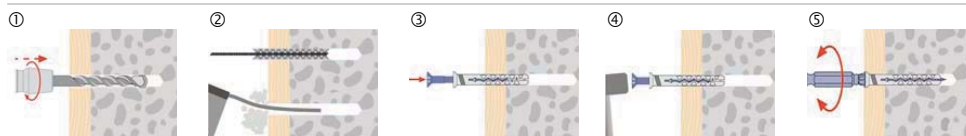
- ① Deforming crumple zone allows quick adjustment on uneven surfaces.
- ② The long expansion zone guarantees optimum stability.
- ③ Reinforced screwhead and shock protection facilitates high knock-in loads with the added benefit of plug neck grip.
- ④ 3 different styles of head: -S = countersunk / -Z = cylindrical / -G = big.
- ⑤ The buttress thread allows adjustment or dismantling.

Applications



- ① Assembly of window profiles.
- ② Wood constructions on perforated brick.
- ③ Connection end plate on concrete.
- ④ Soft Building materials with discs on perforated brick.
 - Can be also assembled with a cordless screwdriver.

Installation



- ① Place the Building materials, take drill hole-Ø and drill hole depth from the table.
- ② Clean the drill hole with a brush, then blow it out with a purging pump (not necessary with perforated brick).
- ③ Insert the Hammer Screw.
- ④ Drive in the Hammer Screw with a hammer.
- ⑤ If required adjust with a screwdriver.

All information detailed in our data sheets is based on technical approvals, formulas and site and laboratory testing under optimum conditions and include a stated safety factor. As we have no direct or indirect control over where or how our products are applied or installed, we do not accept any liability either directly or indirectly arising from the use of our products, whether or not in accordance with any advice, specification or recommendation given by us and we recommend site testing of all products for suitability.

Plug size		5					6					8					10												
Recommended tension loads ¹⁾ :																													
N _{Emp}	- Concrete	kN	0.35					0.5					0.6					0.8											
	- Brick / Sandstone		0.25					0.4					0.5					0.6											
			0.2					0.3					0.4					0.5											
h _{ef}	Effective anchorage depth	mm	25					30					40					50											
h ₁	Drill hole depth	mm	30					35					50					60											
d ₀	Drill hole-Ø in the building material	mm	5					6					8					10											
d _f	Hole -Ø in extension part	mm	5					6					8					10											
l	Plug length	mm	25	30	40	50	35	40	50	60	70	80	50	60	80	100	120	140	80	100	120	140	160						
d _{nom}	Plug-Ø	mm	5					6					8					10											
t _{fix}	Assembling length usable	mm	0	5	15	25	5	10	20	30	40	50	10	20	40	60	80	100	30	50	70	90	110						
d _k	Collar-Ø Type S	mm																											



Collar type S

d_k Collar-Ø Type Z mm

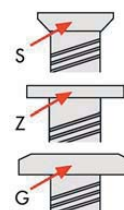


Collar type Z

d_k Collar-Ø Type G mm



Collar type G



Hammer Screw
1) Safety factor 3

Steel stainless A2

Plug size		5					6					8							
Recommended tension loads ¹⁾ :																			
N _{Emp}	- Concrete	kN	0.35					0.5					0.6						
	- Brick		0.25					0.4					0.5						
	- Sandstone		0.2					0.3					0.4						
h _{ef}	Effective anchorage depth	mm	25					30					40						
h ₁	Drill hole depth	mm	30					35					50						
d ₀	Drill hole-Ø in the building material	mm	5					6					8						
d _f	Hole-Ø in the extension part	mm	5					6					8						
l	Plug length	mm	30	50	35	40	50	60	70	60	80	100	120	140					
d _{nom}	Plug-Ø	mm	5					6					8						
t _{fix}	Assembling length usable	mm	5	25	5	10	20	30	40	20	40	60	80	100					
d _k	Collar-Ø Type S	mm																	

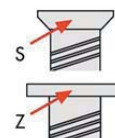


Collar type S

d_k Collar-Ø Type Z mm



Collar type Z



Hammer Screw
1) Safety factor 3

Discs

With Hammer Screws discs can be used if required,

