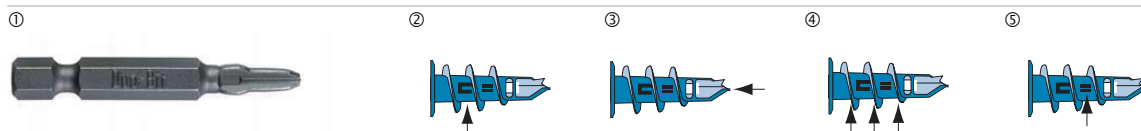


No.	Name	Material
1	Fiber Jet 14 x 39	Polyamide Fiber glass reinforced
2	Fiber Jet 13 x 25	Polyamide Fiber glass reinforced

Building materials

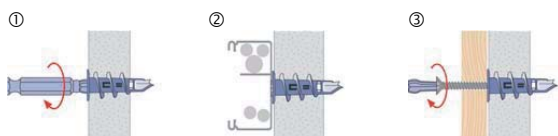


Characteristics



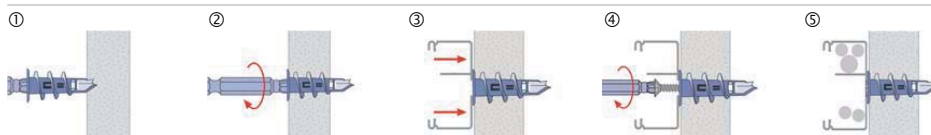
- ① The Fiber Jet can be fixed easily using with the Duo-Bit
 - The Fiber Jet may also be fitted using other tool bits.
- ② The back twist lock permits the disassembly of screws without the movement of the plug.
- ③ Due to the brad point, no pre-drilling is necessary in single plasterboards, double plasterboards or thermalite blocks.
- ④ The thin cutting thread secures a non-expansion hold in soft building materials.
- ⑤ Drilling-dust pockets allow ramming of building material.

Applications



- ① In single plasterboard, double plasterboard and thermalite blocks, screw the plug directly into the base materials.
- ② For the fixing of cable covers, switches and skirting boards.
- ③ Fixing of attached elements.
- For use in: single and double plasterboards, gypsum Fiber boards and thermalite blocks.
- Suitable for the electrical sector (electrical insulated).

Installation



- ① Place the Fiber Jet on a Duo-Bit.
- ② Screw the Fiber Jet directly into the base material, until the collar is flush with the surface. „The collar must not be inserted below the surface of the base material“.
- ③ Position the element to be fixed.
- ④ Insert the screw using the bit.
- ⑤ The attached assembly may only bear on the plug collar.

All information detailed in our data sheets is based on technical approvals, formulas and site and laboratory testing under optimum conditions and include a stated safety factor. As we have no direct or indirect control over where or how our products are applied or installed, we do not accept any liability either directly or indirectly arising from the use of our products, whether or not in accordance with any advice, specification or recommendation given by us and we recommend site testing of all products for suitability.

Plug size			25	32
N_{Emp}	Recommended tension load gypsum plasterboard $d = 12.5 \text{ mm}^{(1)}$	kN	0.09	0.09
d_s	For screw size	M	4	4
	For screw- \emptyset	mm	4 - 4.5	4 - 4.5
d_k	Plug collar- \emptyset	mm	13	14
l	Plug length	mm	25	32



Fiber Jet

1) Safety factor 3

Duo-Bit

The Duo-Bit for the efficient fixing of Fiber Jet

