

No.	Name	Material
1	Screw T30	Zinc plated steel

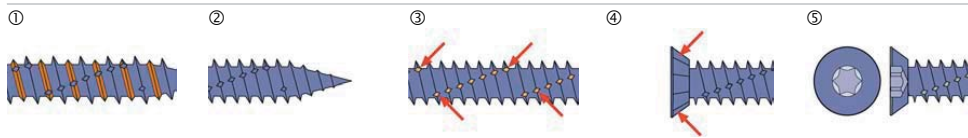
## Building materials



## Qualities

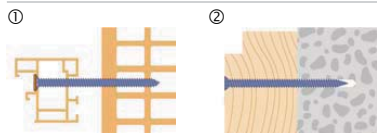


## Characteristics



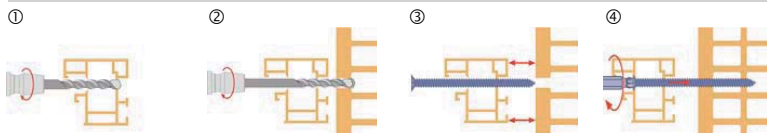
- ① Reduced screw-in resistance with double thread and wax-coating.
- ② Rolled-out thread point for easy assembling.
- ③ Increased security of anchorage due to milling notches.
- ④ Stress-free imbedment due to milling ribs.
- ⑤ Universal with head-Ø 11 mm / T30
  - Distance assembling without additional plug.
  - User-friendly and time-saving assembling.
  - Screw hardened for highest loads.
  - Safe in most kinds of building materials.

## Applications



- ① Distance assembling in perforated brick with end caps T30.
- ② Wood construction on concrete.
  - For assembling of hollow sections.
  - The stress-free fastening allows small distances from edge and between anchors.
- Continuous thread allows void to be held between Building materials and base material.

## Installation



- ① Pre-drill the Building materials, take drill hole-Ø from the table.
- ② Align the Building materials to the base material and drill the material, take drill hole-Ø and drill hole depth from the table (don't through-drill aerated concrete).
- ③ Turn in the Wall Screw in the Building materials and align it.
- ④ Turn in the Wall Screw in the building material.

All information detailed in our data sheets is based on technical approvals, formulas and site and laboratory testing under optimum conditions and include a stated safety factor. As we have no direct or indirect control over where or how our products are applied or installed, we do not accept any liability either directly or indirectly arising from the use of our products, whether or not in accordance with any advice, specification or recommendation given by us and we recommend site testing of all products for suitability.

Screw size			7.5 / T30							
Concrete C20/25										
N <sub>Emp</sub>	Recommended tension load <sup>1)</sup>	kN	1.2							
V <sub>Emp</sub>	Recommended shear load <sup>1)</sup>	kN	0.8							
V <sub>Emp</sub>	Recommended shear load <sup>2)</sup>	kN	1.6							
h <sub>ef</sub>	Effective anchorage depth	mm	30							
T <sub>inst</sub>	Torque for anchoring	Nm	20							
h <sub>1</sub>	Drill hole depth	mm	40							
d <sub>0</sub>	Drill hole-Ø in the building material	mm	6							
t <sub>fix</sub>	Assembling length usable	mm	20	40	60	80	100	120	150	180

Brick										
N <sub>Emp</sub>	Recommended tension load <sup>1)</sup>	kN	0.8							
V <sub>Emp</sub>	Recommended shear load <sup>1)</sup>	kN	0.5							
V <sub>Emp</sub>	Recommended shear load <sup>2)</sup>	kN	1.2							
h <sub>ef</sub>	Effective anchorage depth	mm	40							
T <sub>inst</sub>	Torque for anchoring	Nm	15							
h <sub>1</sub>	Drill hole depth	mm	50							
d <sub>0</sub>	Drill hole-Ø in the building material	mm	6							
t <sub>fix</sub>	Assembling length usable	mm	10	30	50	70	90	110	140	170

Perforated brick										
N <sub>Emp</sub>	Recommended tension load <sup>1)</sup>	kN	0.2							
V <sub>Emp</sub>	Recommended shear load <sup>1)</sup>	kN	0.2							
V <sub>Emp</sub>	Recommended shear load <sup>2)</sup>	kN	0.5							
h <sub>ef</sub>	Effective anchorage depth	mm	60							
T <sub>inst</sub>	Torque for anchoring	Nm	10							
h <sub>1</sub>	Drill hole depth	mm	70							
d <sub>0</sub>	Drill hole-Ø in the building material	mm	6 (without hammer drill)							
t <sub>fix</sub>	Assembling length usable	mm	-	10	30	50	70	90	120	150

Aerated concrete										
N <sub>Emp</sub>	Recommended tension load <sup>1)</sup>	kN	0.2							
V <sub>Emp</sub>	Recommended shear load <sup>1)</sup>	kN	0.1							
V <sub>Emp</sub>	Recommended shear load <sup>2)</sup>	kN	0.3							
h <sub>ef</sub>	Effective anchorage depth	mm	60							
T <sub>inst</sub>	Torque for anchoring	Nm	5							
h <sub>1</sub>	Drill hole depth	mm	assembling without pre-drill							
d <sub>0</sub>	Drill hole-Ø in the building material	mm								
t <sub>fix</sub>	Assembling length usable	mm	-	10	30	50	70	90	120	150

M <sub>Emp</sub>	Recommended bending moment	Nm	17							
d <sub>f</sub>	Hole-Ø in the attached part	mm	6							
d <sub>k</sub>	Ø-head	mm	11							
l <sub>s</sub>	Screw length	mm	50	70	90	110	130	150	180	210
d <sub>s</sub>	Screw-Ø	mm	7.5							



1) Distance to edge > 30 mm  
 2) Distance to edge > 60 mm  
 Safety factor 5

All information detailed in our data sheets is based on technical approvals, formulas and site and laboratory testing under optimum conditions and include a stated safety factor. As we have no direct or indirect control over where or how our products are applied or installed, we do not accept any liability either directly or indirectly arising from the use of our products, whether or not in accordance with any advice, specification or recommendation given by us and we recommend site testing of all products for suitability.