

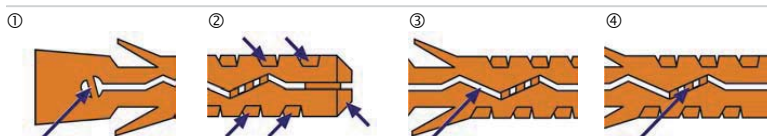
No.	Name	Material
1	Nylon Plug	Polyamide PA 6

Building materials

Qualities

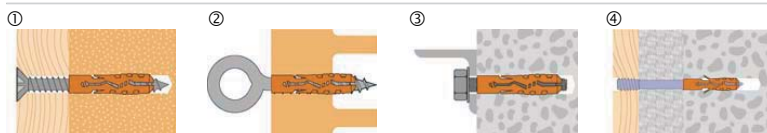


Characteristics



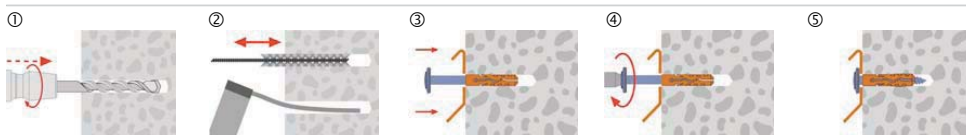
- ① Knock-in protection prevents premature expansion while installing.
- ② Block profile and tapered end hold the plug firm in the hole against rotation and guarantees immediate grip as the plug expands.
- ③ M-Teeth ensures a complete radial expansion during screw insertion.
- ④ Stabilization points prevent the plug from breaking open while inserting into the hole.

Applications



- ① Wood-construction directly on building material.
- ② Eye hook screw in perforated brick.
- ③ Angle steel on concrete.
- ④ Wood-construction with adjusting screw in concrete.
 - Pre-assembly fixing or through fixing possible.
 - Application on most building materials.

Installation



- ① Take drill hole-Ø and drill hole depth from the table.
- ② Clean the drill hole with a brush, then blow it out with a purging pump (not necessary with perforated brick).
- ③ Fix Nylon Plug and Building materials (pre-assembly fixing or through fixing possible).
- ④ Fasten Building materials with a screw.
- ⑤ Fully tighten screw to anchor fixture

All information detailed in our data sheets is based on technical approvals, formulas and site and laboratory testing under optimum conditions and include a stated safety factor. As we have no direct or indirect control over where or how our products are applied or installed, we do not accept any liability either directly or indirectly arising from the use of our products, whether or not in accordance with any advice, specification or recommendation given by us and we recommend site testing of all products for suitability.

Plug size		4	5	6	7	8	10	12	14	15	16	20	
Recommended tension loads ¹⁾ :													
N _{Emp}	- Concrete	kN	0.25	0.35	0.6	0.7	0.85	1.4	1.8	3	3.1	3.5	5.2
	- Brick / Red Bricks		0.2	0.3	0.5	0.65	0.8	1	1.4	1.5	1.6		
	- Aerated Concrete		0.02	0.04	0.06	0.07	0.09	0.2	0.4	0.5	0.6	0.6	1
Screw measurement:													
d _s	- Wood screws-Ø	mm	2.2-3	2.6-4	3.5-5	4.5-5	4.5-6	6-8	8-10	10-12	10-12	12-14	14-16
	- Chipboard screws-Ø												
	- Metric screws	M	-	3	4	4	5	6	8	10	10	12	14
h ₁	Drill hole depth	mm	30	35	40	50	55	65	80	90	95	100	115
d ₀	Drill hole-Ø in the building material	mm	4	5	6	7	8	10	12	14	15	16	20
l	Plug length	mm	20	25	30	35	40	50	60	70	75	80	90
d _{nom}	Plug-Ø	mm	4	5	6	7	8	10	12	14	15	16	20



Nylon Plug

1) Wood screws with maximum diameter / Safety factor 5

Material Characteristics

Polyamide PA 6 nylon-products are made from high-grade polyamide PA 6. Due to its excellent characteristics PA 6 is a valuable material for fastener production, offering :

- Large temperature range of -40° up to 100° C
- Absorption of humidity results in high mechanical features such as impact strength and resistant to distortion
- Excellent stability for dynamic loads
- Minor inflammability and self-extinguishing properties
- Halogen-free material
- PA 6 exhibits higher strength under temperature influences compared with conventional plastics.
- The deformation characteristics of polyamide PA 6 offers greater values in comparison to conventional plastics.
- Polyamide PA 6 absorbs sound transmission between construction unit and building material.



Polyamide PA6 logo

All information detailed in our data sheets is based on technical approvals, formulas and site and laboratory testing under optimum conditions and include a stated safety factor. As we have no direct or indirect control over where or how our products are applied or installed, we do not accept any liability either directly or indirectly arising from the use of our products, whether or not in accordance with any advice, specification or recommendation given by us and we recommend site testing of all products for suitability.