

No.	Name	Material	No.	Name	Material
1	Plug	Polyamide PA 6	4	Washer	Zinc plated steel
2	Stick Screw	Zinc plated steel	5	Hexagon nut	Zinc plated steel
3	Flush collar	Polyethylene			

Building materials



Qualities



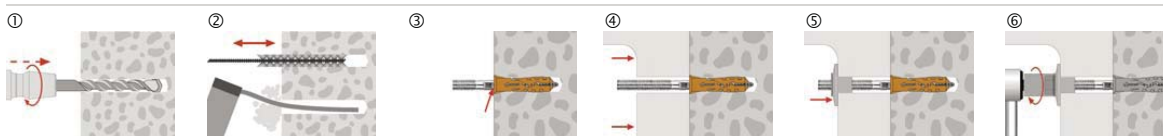
Characteristics

Applications



- ① Fixings of wash basins.
- ② Fixings of urinals.

Installation



- ① Take drill hole-Ø and drill hole depth from the table.
- ② Clean the drill hole with a brush, then blow it out with a purging pump.
- ③ Insert the Nylon Plug, screw in the stick screw until the mark is reached.
- ④ Position the Building materials.
- ⑤ Push on the flush collar and washer.
- ⑥ Tighten the nut.

All information detailed in our data sheets is based on technical approvals, formulas and site and laboratory testing under optimum conditions and include a stated safety factor. As we have no direct or indirect control over where or how our products are applied or installed, we do not accept any liability either directly or indirectly arising from the use of our products, whether or not in accordance with any advice, specification or recommendation given by us and we recommend site testing of all products for suitability.