

No.	Name	Material	No.	Name	Material
1	Plug	Polyamide PA 6	3	Flush collar	Polyethylene
2	Stick Screw	Zinc plated steel			

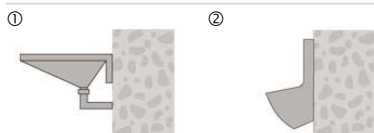
**Building materials**

**Qualities**



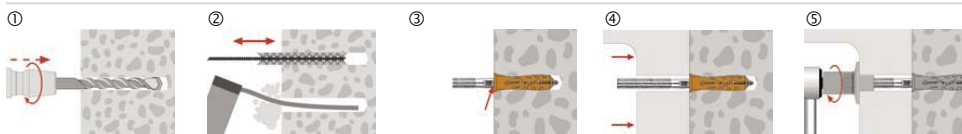
**Characteristics**

**Applications**



- ① Sanitary fixing for wash basins.
- ② Sanitary fixing for urinals.

**Installation**



- ① Take drill hole-Ø and drill hole depth from the table.
- ② Clean the drill hole with a brush, then blow it out with a purging pump.
- ③ Insert the Nylon Plug, screw in the Stick Screw until the mark is reached.
- ④ Position the Building materials.
- ⑤ Tighten the flush collar with internally thread.

All information detailed in our data sheets is based on technical approvals, formulas and site and laboratory testing under optimum conditions and include a stated safety factor. As we have no direct or indirect control over where or how our products are applied or installed, we do not accept any liability either directly or indirectly arising from the use of our products, whether or not in accordance with any advice, specification or recommendation given by us and we recommend site testing of all products for suitability.