

No.	Name	Material
1	Wire hanger	Zinc plated steel

Building materials



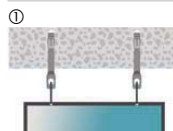
Qualities



Characteristics

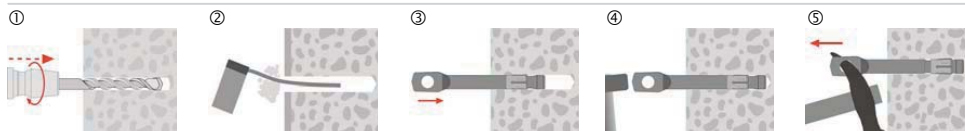
- Suitable for lightweight suspended loads.
- For safe anchorage the Wire Hanger is expanded with a claw hammer after insertion.

Applications



- ① Lightweight loads on ceilings such as signboards, billboards, lamps etc.

Installation



- ① Take drill hole-Ø and drill hole depth from the table.
- ② Clean the drill hole with a brush, then blow it out with a purging pump.
- ③ Insert the Wire Hanger.
- ④ Drive the Wire Hanger completely in with a hammer.
- ⑤ Strain the Wire Hanger firmly.

All information detailed in our data sheets is based on technical approvals, formulas and site and laboratory testing under optimum conditions and include a stated safety factor. As we have no direct or indirect control over where or how our products are applied or installed, we do not accept any liability either directly or indirectly arising from the use of our products, whether or not in accordance with any advice, specification or recommendation given by us and we recommend site testing of all products for suitability.

	Size		6	
N _{Emp}	Recommended tension load concrete ¹⁾	kN	0.5	
h _{min}	Min. thickness of foundation	mm	70	
h _{ef}	Effective anchorage depth	mm	34	
h ₁	Drill hole depth	mm	50	
d ₀	Drill hole-Ø in the Building materials	mm	6	
d _w	Inside-Ø eye hook	mm	5	6
l	Length	mm	50	60
d _{nom}	Plug-Ø	mm	6	



Wire Hanger

1) Without influence of anchor and edge distance / Safety factor 3